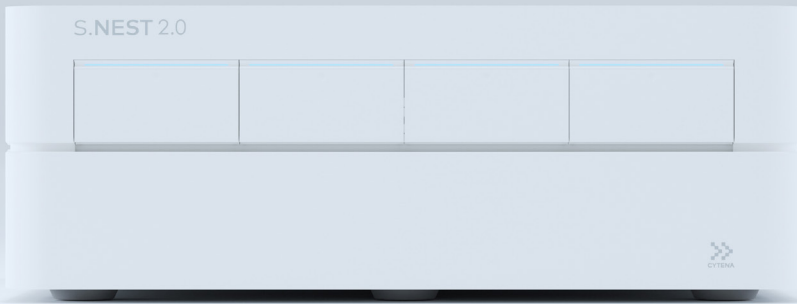


# S.NEST<sup>®</sup> 2.0



## Bioreactor-like mixing

Higher viable cell density  
Higher viability

- One 96/24-well plate for each independent chamber
- New "Suspension boost" mixing mode to increase suspension rate
- Adjustable mixing pattern to fit your cell type



## CO<sub>2</sub> Incubation

Precise environmental control  
Independent settings for each chamber

- Water reservoir
- Temperature control
- CO<sub>2</sub> level control
- Humidity monitoring
- UV light sterilization



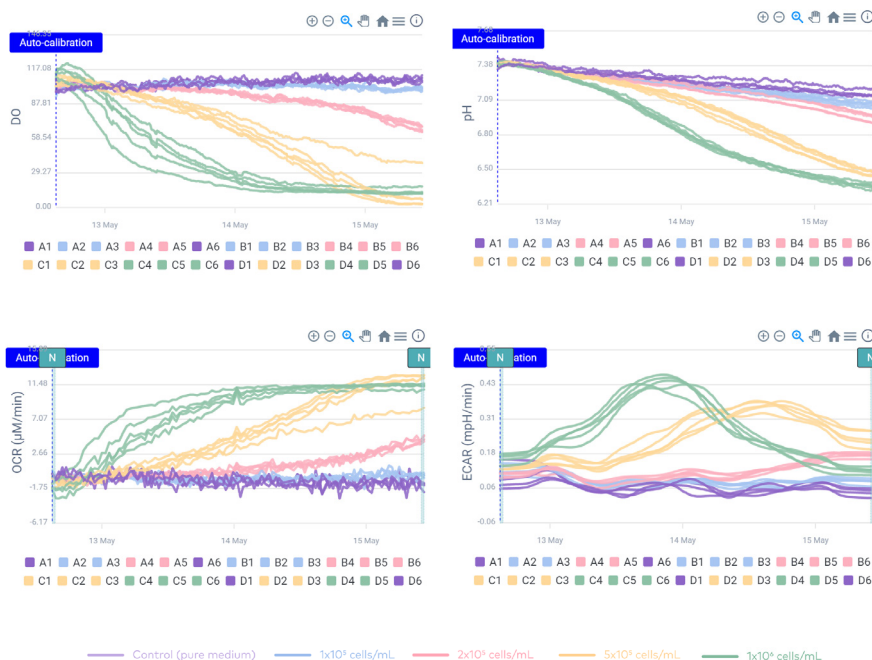
## Cell metabolic monitoring

Real-time, non-invasive,  
sampling-free monitoring

- DO (dissolved oxygen)
- pH
- OCR (oxygen consumption rate)
- ECAR (extracellular acidification rate)

# Simultaneous real-time metabolic monitoring

and superior cell culture in 96/24 well plates



### CONTACT

Email: [info@cytena-bps.com](mailto:info@cytena-bps.com) | Taiwan phone: (+886) 2-2720-6135 |  
More info: <https://www.cytene-bps.com/>

**CYTENA BPS**

A BICO COMPANY